

Developing and Testing a Model for the Treatment and Storage of Archaeological Iron

Or:

A Tale of Two Cities



Melanie Rimmer
AHRC Collaborative Doctoral Award Holder



Contents

- CDAs and the British Museum
- My research project
- My experiences
 - Structuring the research
 - How the collaboration works
 - The problem (or not) of location
- Conclusions

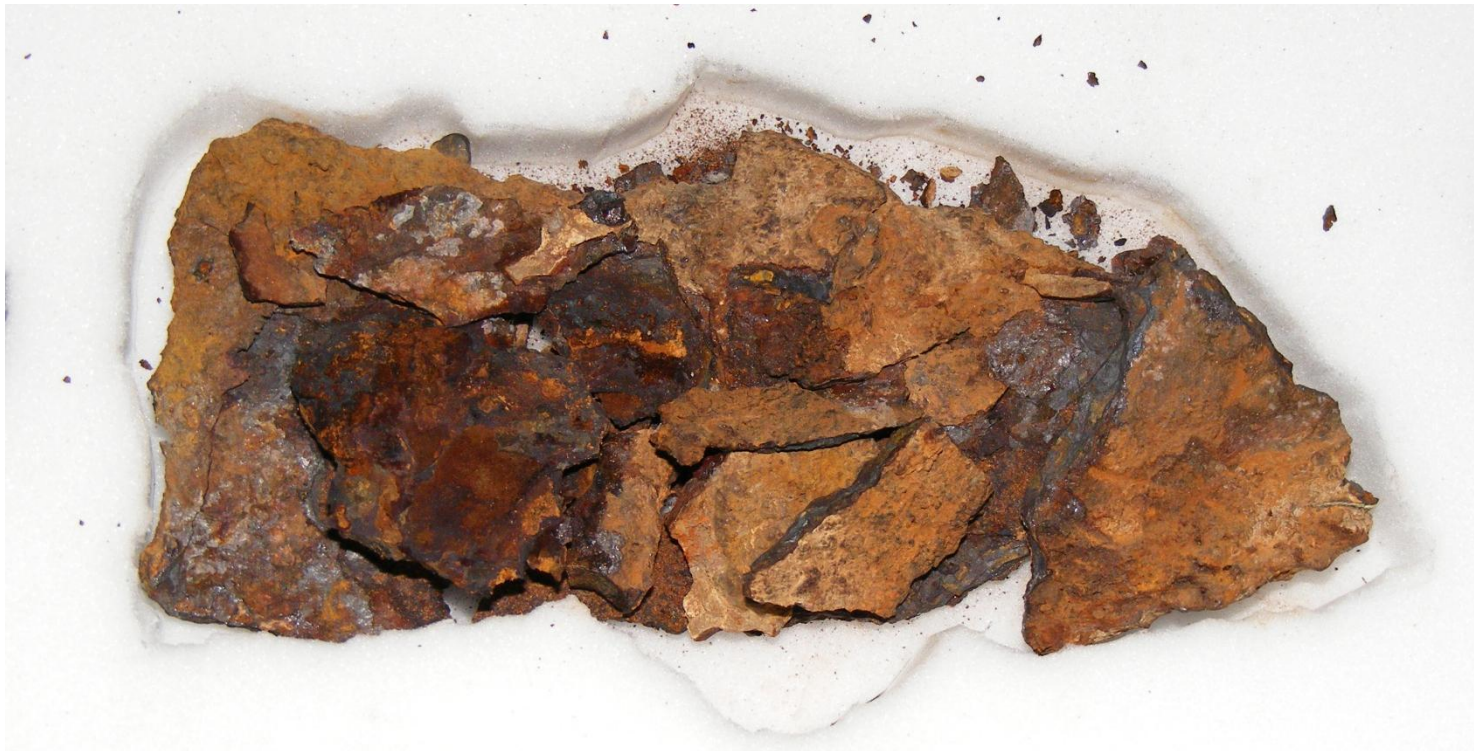


CDAs at the British Museum

- Courtauld Institute
- UCL
- Kings College London
- Royal Holloway
- Queen Mary
- **Current students: 24**
- Leicester
- Cambridge
- Bristol
- Oxford
- Durham
- Newcastle
- Southampton
- Sussex
- Reading
- Manchester
- Cardiff

My research topic

- Investigating treatments for iron corrosion in museums



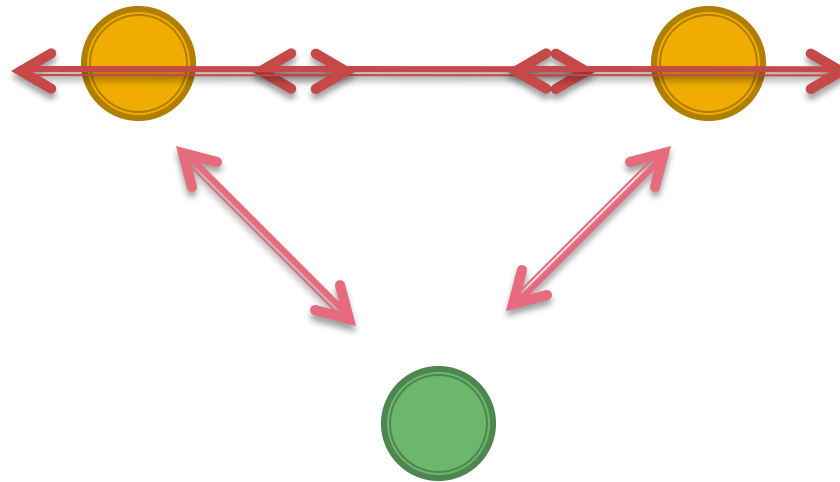
Why collaboratively?

- Benefit to me
 - Practical experiences
 - 'Both sides of the coin'
- Benefit to the museum
 - Research access
 - Specific outcomes
- Benefit to the university
 - Resources
 - Relationships

How collaboration works (?)

HEI supervisor
(Cardiff)

Non-HEI supervisor
(BM)



Student
(Me)

Project structure

- First 3 months: planning and familiarisation
- 2008: in Cardiff (experimental work)
- 2009: in BM (experimental work)
- 2010: in Cardiff (finishing experiments and writing up)

Experiences

- The influence of location
 - On personal life
 - On research
 - On relationships with supervisors

Conclusions

- **Every CDA is different!**
- **Who** is doing the collaborating?
- The influence of location
- Allocation of roles

Acknowledgements

- David Watkinson, Cardiff University
- Dr Quanyu Wang, Dr JD Hill, Fleur Shearman, and all in the Department of Conservation and Scientific Research at The British Museum
- Arts and Humanities Research Council

http://www.britishmuseum.org/research/research_projects/archaeological_iron.aspx

mrimmer@thebritishmuseum.ac.uk